

Bow Pocket Purse

Make a fashionable bag in your favorite colors.

SPECIFICATIONS

Skill Level: Intermediate
 Bag Size: Approximately
 14" x 11" x 4"
 excluding handles

INSTRUCTIONS

Completing the Bag

Note: Use a 1/2" seam allowance throughout unless otherwise instructed.

Step 1. Fold one B piece in half with wrong sides together as shown in Figure 1; press. Fold and crease to mark the center of the folded edge.

Step 2. Sew two lines of basting stitches close together from the folded edge to the raw edge along the creased center, again referring to Figure 1.

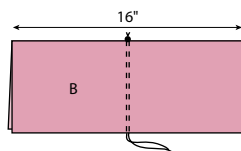


Figure 1

Step 3. Pull basting stitches to gather to 6" along gathered line as shown in Figure 2; knot thread to hold.

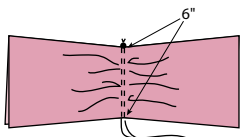


Figure 2

Step 4. Fold the C piece with right sides together along length; stitch along length. Turn right side out; press with seam centered as shown in Figure 3.



Figure 3

Step 5. Wrap the C piece around the gathered center of B, aligning bottom ends of C with bottom edges of B as shown in Figure 4; stitch 1/4" from bottom edges to hold.

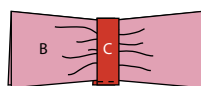


Figure 4

Step 6. Place an A batting piece on the wrong side of one A piece; pin to hold in place. Quilt, if desired.

Step 7. Arrange and pin the B-C unit on the layered A piece, matching bottom centers; stitch along both edges of C through all layers as shown in Figure 5.

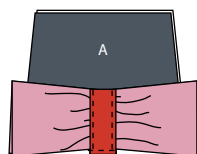


Figure 5

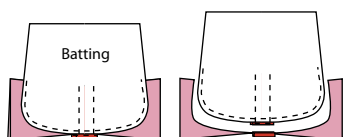


Figure 6

Step 8. Smooth the B piece to the side edges of A, neatly arranging gathers; pin in

place. Stitch B to A, from the batting side of A, 1/4" from A edges as shown in Figure 6.







Step 9. Trim excess B-C away at bottom corners to match A to complete one bag unit, again referring to Figure 6.

Step 10. Repeat Steps 1-9 to make a second bag unit.

Step 11. Fold the D piece in half with right sides together to make a 9" x 7 1/2" piece;

stitch around raw edges with a 1/4" seam allowance, leaving a 3" opening on the bottom long edge. Clip corners; turn right side out through opening. Press edges flat. Press opening edges to the inside 1/4"; hand-stitch opening closed to finish the D pocket.

Step 12. Place the E pieces wrong sides together; fold and press 1/4" over on each end. Bring the folded ends to-

FABRIC	Measurements based on 42" usable fabric width.	# STRIPS & PIECES	CUT	#PIECES	SUBCUT
 1/4 yard black tonal*		1	5" x 34" F		
 5/8 yard red/pink/cream print*		1	16" x 42"	2	20" B pieces
 5/8 yard lining*		1	5" x 34" F A pieces as per pattern		
 5/8 yard red print*		1	5" x 42"	2	13" C pieces
 5/8 yard red print*		2	5" x 36" G		
 1 yard black floral*		2	9" x 42"	1	15" D piece
			A pieces as per pattern	2	15" E pieces

SUPPLIES

- 1 yard low-loft batting
- Neutral-color all-purpose thread
- Quilting thread
- 4 (1 3/8") black buttons
- 1 (9") black zipper
- 1 (3/4") magnetic clasp
- 1/8 yard heavyweight fusible interfacing
- Basic sewing tools and supplies

*City Sparkler fabric collection from Exclusively Quilters used to make sample.



From *Quilter's World* magazine, August 2009, Vol. 31, No. 4, Copyright © 2009 *Quilter's World* magazine

gether and insert the zipper between the ends as shown in Figure 7. Stitch in place.

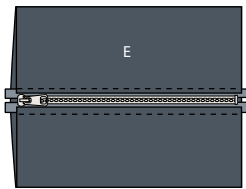


Figure 7

Step 13. Open the zipper 1"; turn the unit to place the zipper on the inside as shown in Figure 8.

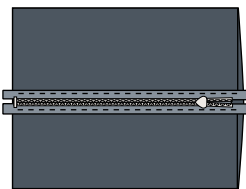


Figure 8

Step 14. Fold the unit so the zipper is 1" from the top edge as shown in Figure 9. Stitch along the raw side edges using a 1/4" seam allowance, again referring to Figure 9. Trim zipper ends even with the fabric edges.

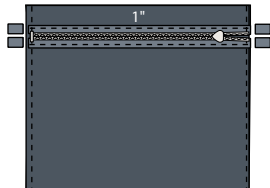


Figure 9

Step 15. Open the zipper; turn the unit out through the zipper opening. Press the side, top and bottom edges flat to complete the E pocket.

Step 16. Center and pin the D pocket on the right side of one A lining piece 2" down from the top edge as shown in Figure 10; machine-stitch in place around sides and across bottom. Stitch a line down through the center to divide the pocket.

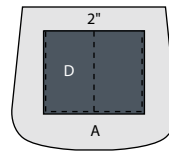


Figure 10

Step 17. Repeat Step 16 with the E pocket and remaining A lining piece except do not stitch through the center.

Step 18. Cut one 5" x 34" batting strip. Place black

tonal F strip on the batting strip; quilt as desired to hold together.

Step 19. Prepare a trimming template using the pattern given. Place the template on each end of the layered F strip and trim to make angled ends as shown in Figure 11.

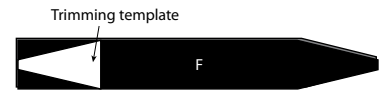


Figure 11

Step 20. Pin the layered F strip right sides together with one bag unit starting at the bottom center and ending on the top edges; stitch. Repeat with the remaining bag unit on

Now ... get INSTANT digital access to *Quilter's World*!



★ Zoom in on text and photos!

Sign up for a one-year digital subscription and you'll get

- ... the current issue-instantly!
- ... the next five issues as they come out, one every other month
- ... two years of back issues (instantly accessible & easily searchable!)
- ... all of the articles and patterns with enlargeable type and images

Get your digital subscription to *Quilter's World* right now!

Find out more at

Digital.Quilters-World.com

the opposite edge of F to complete the bag shell.

Clip curves as necessary to smooth seam allowances.

Step 21. Trim the lining F strip using the trimming template. Repeat Step 20 with the lining A pieces and the trimmed F strip to complete the lining. *Note: The lining F strip is not layered with batting.*

Step 22. Cut two 2" x 2" squares of heavyweight fusible interfacing. Center a square 1/2" down from the top edge of the front and back of the lining; fuse in place.

Step 23. Referring to the manufacturer's instructions, attach magnetic clasp pieces 1 1/2" from the top edge of the front and back lining of the lining through the fabric and the interfacing.

Step 24. Turn the top raw edges of the lining and outer shell to the wrong side 1/2"; press and machine-baste to hold.

Step 25. Place the lining unit inside the outer shell with wrong sides together, matching top edges; top-

stitch close to edge around the top.

Step 26. Cut two 2" x 36" batting strips. Turn under one long edge of a G strip 1/4"; press. Center a batting strip on the wrong side of the G fabric strip as shown in Figure 12. Fold the long raw edge over the batting. Fold the long folded edge to cover the raw edge; press. Stitch along center folded edge and 1/4" from each long edge to complete one handle strip. Repeat to make a second handle strip.



Figure 12

Step 27. Pin the raw ends of one handle strip 1 1/2" down from the top edge and 1 1/2" from the bag center as shown in Figure 13; machine-stitch close to raw ends to hold in place, securing at seam ends. Fold the strip up, leaving 1/2" below the stitched end as shown in Figure 14; stitch 3/8" from folded bottom edge and close to top edge of bag, again referring to Figure 14.

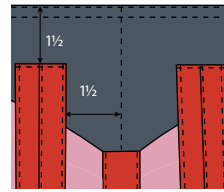


Figure 13

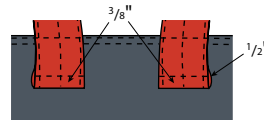


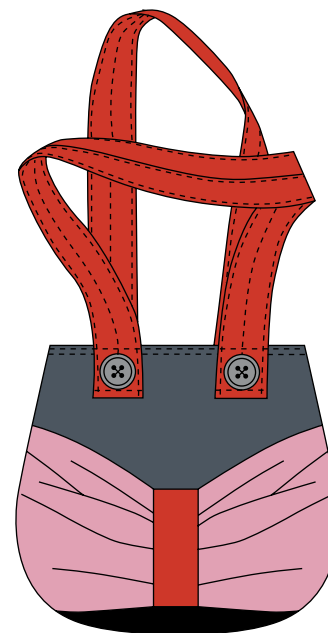
Figure 14

Step 28. Repeat Step 27 with second handle strip on the other side of the bag.

Step 29. Sew a 1 3/8" button 3/4" from bottom folded edge of each handle as shown in Figure 15 to complete the bag. **QW**



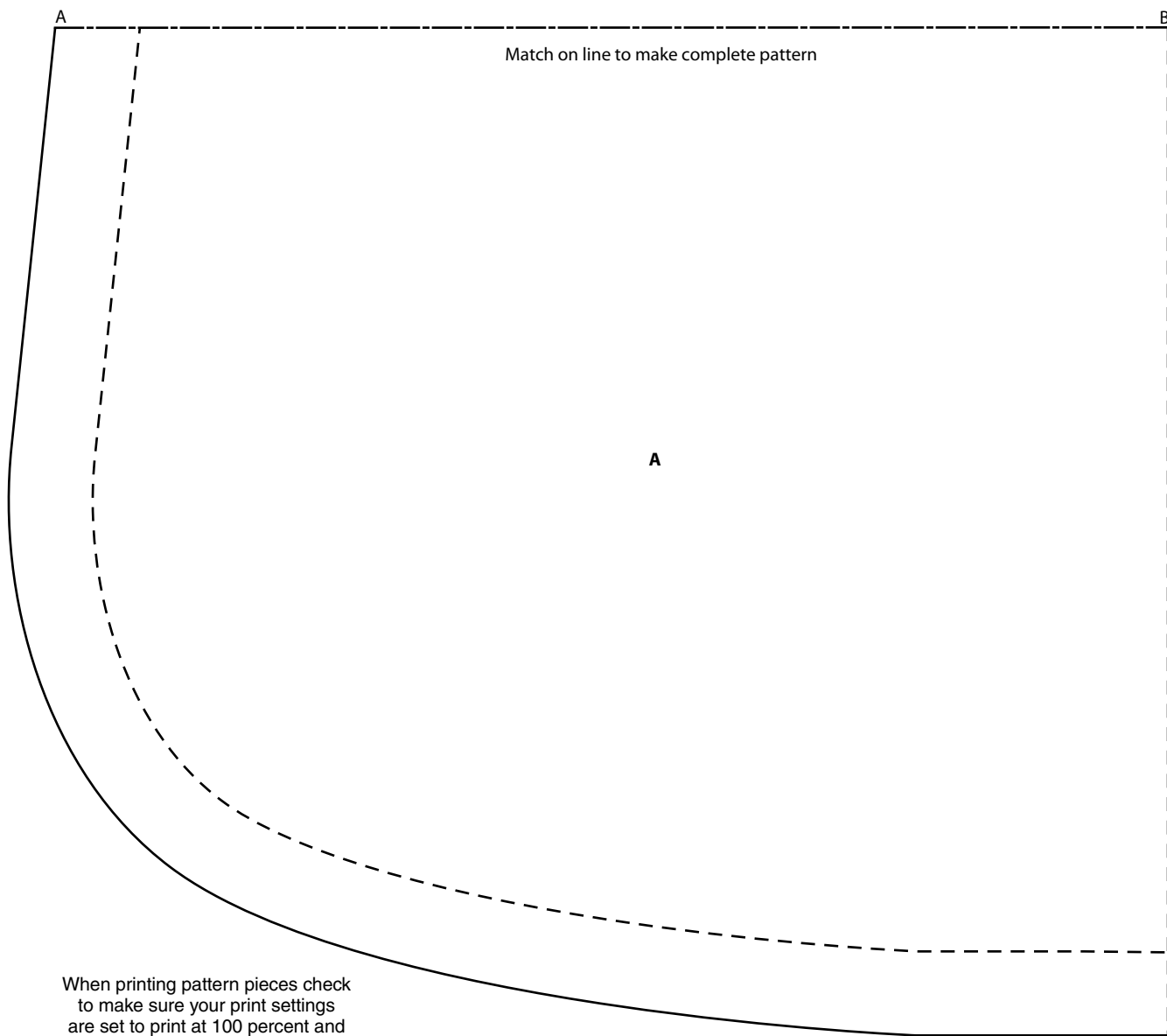
Figure 15



Bow Pocket Purse

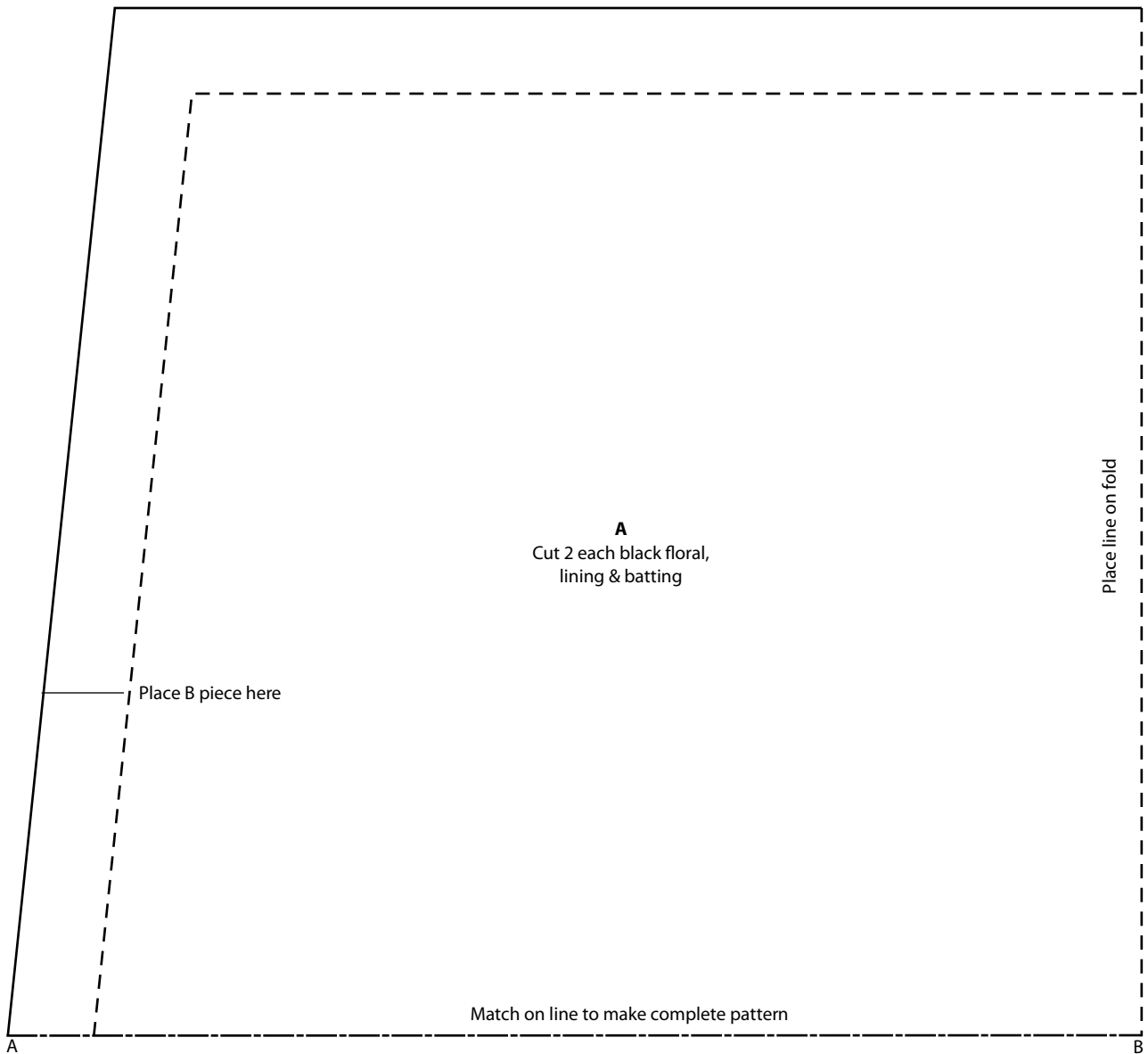
Placement Diagram Approximately 14" x 11" x 4" excluding handles

BOW POCKET PURSE TEMPLATE



When printing pattern pieces check to make sure your print settings are set to print at 100 percent and page scaling displays "None."

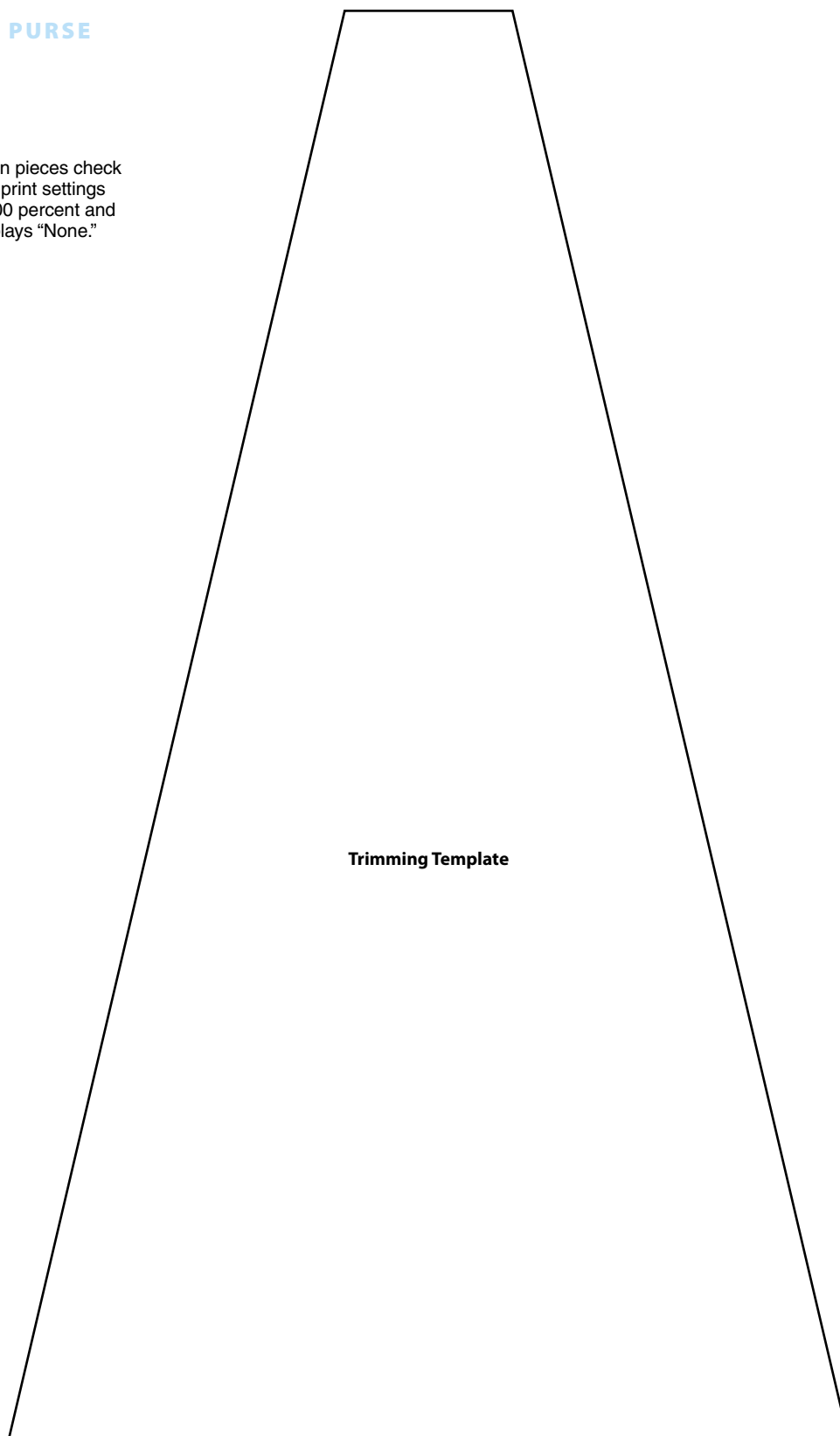
BOW POCKET PURSE TEMPLATE



When printing pattern pieces check to make sure your print settings are set to print at 100 percent and page scaling displays "None."

BOW POCKET PURSE TEMPLATE

When printing pattern pieces check
to make sure your print settings
are set to print at 100 percent and
page scaling displays "None."



Trimming Template